

# ALDERTON PARK #05 ALDERTON DRIVE

**SOLD**



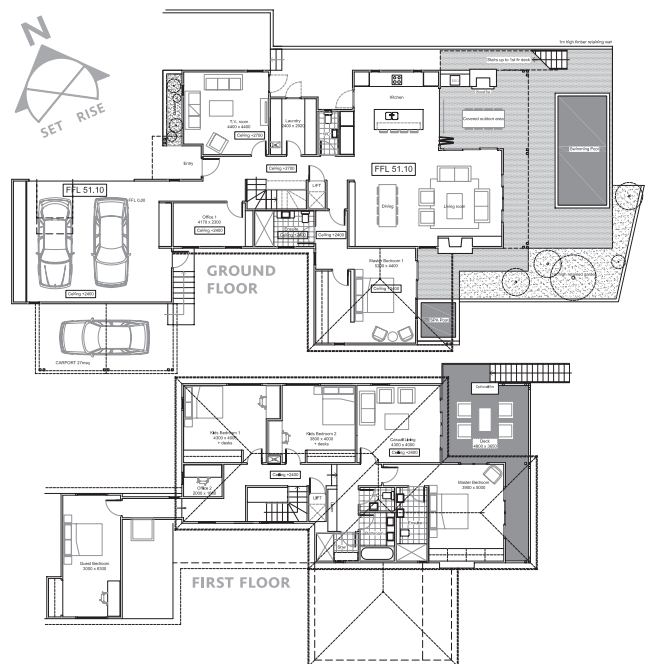
Your lifestyle awaits...

LAND AREA - 1334 M2 + DECKING - 120.2 M2  
TOTAL FLOOR AREA - 373 M2 + COURTYARD AREA - 26 M2

This grand home has been designed for a large family with a focus on entertaining and social occasions, whilst still allowing everyone in the family their own space. The exterior aesthetic and interior layout are a direct result of working closely with the client. We discussed how, when and where they like to live in various spaces, ultimately creating a design that fulfils the expectations they have of their dream home.

Boasting five bedrooms, two with ensuites, two living areas, a media room and open plan living out to the covered outdoor courtyard with log fire and infrared heater. Directly out from the main living area is a heated pool and spa. With both levels of the home having living and deck areas, it allows the family to enjoy their own space. Additionally there are two offices, a guest loft and a passenger lift. The elevated position ensures all living areas and master suites enjoy panoramic views and easy access.

THE ALDERTON PARK DESIGN AND BUILD PROCESS IS EASY AND ENJOYABLE. FOR THESE CLIENTS WE DISCUSSED THEIR SPECIAL REQUIREMENTS AND DESIRED POSITION IN THE PARK, HOME CONCEPTS WERE THEN DEVELOPED BY ONE OF OUR ARCHITECTS AND PRESENTED. THE DETAILS OF THE HOME WERE THEN REFINED, TIME FRAMES SET AND A FIXED PRICE AGREED - WE TAKE CARE OF THE REST.



0800 ALDERTON (25 33 78)

WWW.ALDERTONPARK.CO.NZ

EXCLUSIVELY MARKETING BY

**HARVEYS**